

# SINA

reports

fall 2004

HARTFORD ON ICE

In two years, Hartford residents will once again enjoy ice skating. In the fall of 2006, a new Community Sports Complex is slated to open in Hartford's Southside, giving children, families, and area residents access to an ice rink, as well as a fitness center, rock climbing wall, and community rooms. The complex, a collaborative effort between SINA and Trinity College, is being constructed on the southern edge of the Trinity campus and will serve as home-ice for Trinity's Men's and Women's Ice Hockey Teams.

Designed as an extension of the Learning Corridor educational campus, the sports complex meets one of SINA's key objectives-providing safe space for recreational opportunities and constructive programming for the community. The Complex may be the first urban community athletic facility in the country that connects neighborhood families with the resources of a liberal arts college.

"If you are going to revitalize a neighborhood you need to do it with positive things," Community leader Hyacinth Yennie expressed. "The Community Sports Complex is a positive thing that everyone supports. It is good for us to have a place like that close by - a facility our youth can utilize."

The Sports complex fulfills a decade-old vision for Hartford to once again have its own ice rink. In the mid 70's Hartford's sole ice skating rink in Colt Park closed along with the City's pond skating programs in Keney, Goodwin and Elizabeth parks. Since then, kids, families, and local school teams have had to commute out of the city to play hockey, figure skate, or simply have some time on the ice. In 2002 ice skating was once again available in Hartford when Leadership Greater Hartford opened a temporary skating pond in Bushnell Park. "It was such a success," Hyacinth Yennie described. "We knew we had to do something else."

That "something else" took shape in the plans for the



Hartford's new Community Sports Complex will provide community access to an ice rink and other recreational facilities.

continued on page 3



On August 6th, 2004, demolition of the dilapidated Trinity Plaza began, in preparation for construction of the new Community Sports Complex. Trinity President James F. Jones, Jr. maneuvered the demolition claw into place.

## In This Issue

- A Sign of Progress
- A Conversation with Chief Patrick J. Harnett
- Executive Director's Message



## Executive Director's Message

Every new season brings with it a sense of expectation and evaluation. Temperatures drop and thoughts turn towards sweaters, snow, and winter activities. For SINA, the coming season brings the anticipation of ice skating. In November, SINA and Trinity College will break ground on the Community Sports Complex, a multi-use athletic facility that will include an ice rink, fitness center, and community rooms. The Complex, scheduled for completion in fall 2006, will serve Trinity students, as well as provide the community with recreation programs and skating access.

The City of Hartford also raised its community policing efforts with the appointment of Chief Patrick J. Harnett as the new leader for Hartford Police Department. In September SINA hosted a meeting to initiate a dialogue with the Chief and SINA member institutions, to introduce him to our neighborhood revitalization efforts, and to discuss crime and safety concerns in the Southside community. SINA's member institutions participated in the conversation, emphasizing their commitment to working with the police department to improve the quality of life in the area.

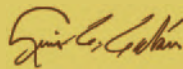
As autumn arrives, SINA reflects back on a successful summer of streetscape improvements and neighborhood beautification. Along Hudson and Jefferson streets, new curbs, bricks, and lampposts create a clean contiguous look. Park Street also saw significant progress this summer; brick by brick, new sidewalks, streets and parking improvements are being built to enhance the street's inherent flavor and appeal.

In addition to these streetscapes, SINA celebrates specific physical improvements throughout the neighborhoods. On the southern end of Maple Avenue, the Barry Square triangle received a facelift, with flowers, mulch, and landscape maintenance. At the avenue's other end, a new merchant's sign welcomes motorists to Hartford and to a variety of shops and restaurants down the road.

On Allen Place, a wrought-iron fence now adds distinction and protection to the southern and western edges of the Zion Hill cemetery. Working with Trinity College and the City, SINA helped erect the fence in July, replacing a dilapidated chain-link fence. The new fence has made a significant visual difference on Allen Place. SINA plans to install a similar fence on its lot on Brownell Avenue. The fence will be erected in coordination with other beautification improvements planned by a Brownell Avenue residents group, and made possible with a grant from Mayor Perez's Pride Block program

With winter approaching, the renovation work on our Cityscape Apartments intensifies. Roofs, windows, and doors are being repaired to secure the buildings against inclement weather. Working with Broad-Park Development Corporation, SINA aims to complete the exterior of 12 buildings while weather permits, then accomplish the interior renovations in the winter months. With this schedule, 22 newly restored units will be available by springtime.

We're looking forward to the new season ahead, with the grand opening of the Solomon Building as the new home of Mi Casa Family Service & Educational Center, and to congratulating the 2004 Neighborhood Service Awards recipients.



# Revitalized Roads

From every angle, the roads around Hartford Hospital have a new look. Throughout the last 8 years, streetscape improvements have transformed the Hospital's perimeter, including Seymour St., Retreat Ave., Washington Ave., and, most recently, Jefferson and Hudson Streets. With new sidewalks, curbs, bricks, landscaping, fencing, lampposts, and signage, the completion of Jefferson and Hudson mark the fulfillment of Hartford Hospital's commitment to its surrounding streetscapes.

"We've had good feedback from staff, patients, and visitors," Hartford Hospital Vice President Kevin Kinsella stated. "The streetscapes have had a very positive impact."



*A new sign at the end of Hudson Street welcomes staff and visitors to Hartford Hospital.*



*The Jefferson and Hudson Streetscape included new lampposts with a historic look.*

"The streetscapes have had a  
very positive impact."

-Kevin Kinsella, Hartford Hospital Vice President

SINA's mission is to work cooperatively with the community to develop leadership and improve the economic, physical and social characteristics of Hartford's Frog Hollow, Barry Square and South Green Neighborhoods.

Publisher: American View Productions LLC

LUIS C. CABAN - Executive Director • JOHN M. BAILEY - Special Assistant To The Executive Director

IVETTE QUIROS - Administrative Assistant • LUZ CONDE - Assistant Director • KEITH HEDMAN - Fiscal Officer



# A Conversation with Chief Patrick J. Harnett

*“I believe we can make a difference”*  
-Chief Patrick J. Harnett

Collaboration depends on communication. On Thursday September 16, SINA invited Hartford's new police chief Patrick J. Harnett to meet with the SINA and its member institutions for a conversation focused on current safety and quality of life issues in the Southside neighborhoods.

SINA's Executive Director Luis Cabán opened the discussion by outlining the previous cooperative efforts between SINA and the Hartford Police Department, including the COPS grant, purchase of crime fighting equipment, and security force collaboration. Leaders from the member institutions confirmed the benefits and necessity of this partnership.

“The South End has a lot going for it in terms of institutional leadership and commitment. We are willing to do our part,” Hartford Hospital's President/CEO John Meehan expressed. He emphasized the willingness of SINA and its member institutions to make themselves available to assist the police department. Dr. James Jones, president of Trinity College, thanked the chief for the department's immediate attention to the prostitution concerns, indicating the success of college security and police working together.

Kevin Kinsella, chairman of SINA's board of directors and VP of Hartford Hospital, reinforced the willingness of SINA's member institutions to contribute their resources and knowledge to crime prevention. “We have identified the problem areas, and we want to work with HPD to eradicate crime in our neighborhoods.

SINA also presented the area's recent crime statistics and trends, noting the disturbing increase in overall crime in the Frog Hollow and South Green neighborhoods. In addition to the concerns of drugs, prostitution, and theft, Cabán explained the prevalence of serious quality of life issues including public drinking, loitering, noise and traffic problems. SINA expressed its desire to protect the community revitalization efforts, like the homeownership opportunities being created on Colonial and School streets.

Chief Harnett opened his response by expressing his optimism regarding the city and the department. “I came here because I really believe in police, in public service. I believe we can make a difference. Hartford has been described to me as a city on the rise. I've never seen a place with more active involvement from neighborhoods.”

Chief Harnett comes to Hartford with 32 years of experience in the New York City Police Department, including serving as the Chief of NYPD's Transportation Bureau and First Deputy Director of the New York/New Jersey High Intensity Drug Trafficking Area (NY/NJ HIDTA). Appointed as Hartford's Chief on June 24th, Chief Harnett described his current position as one of listening and learning. Currently, he is reviewing the performance of HPD as an organization, and developing effective strategies to accomplish his mandate from the mayor: to develop an enhanced community policing program. Harnett also noted a threefold focus - connectivity with the community, serious crime

issues, and quality of life issues.

The morning finished with affirmations that continued dialogue and cooperation are keys to improving the safety and quality of life in the Southside and throughout the city.

“It would be good for the community groups to be on the same page in regards to HPD's priorities and concerns.” We can help the police department if we know the direction. We can reinforce what you are doing.” Meehan determined. “We are working hand in hand - the problem belongs to us all”

Cabán concluded by thanking the chief, assuring that communication and collaboration will continue, and offering SINA as a vehicle to disseminate information to the broader community.



Hartford Police Department's Chief Patrick J. Harnett speaks with SINA and leaders from SINA's member institutions.

*“I've never seen a place with more active involvement from neighborhoods.”*  
-Chief Patrick J. Harnett

## HARTFORD ON ICE

cont'd from page 1

Community Sports Complex, a facility that will provide community access to ice, and much more. While in the winter months the sports complex will serve primarily as a skating center, the Complex is designed as a true multi-use community resource; “The facility's size and design will support community mentoring programs, one-on-one coaching, and organized academic instruction for students from local schools and youth programs-these programs will be invaluable for Hartford youth,” explained Luis Cabán, Executive Director of SINA. The Complex's community outreach programs, including supervised athletics and tutoring programs, will be organized on weekends and weekdays after school. At these times, according to Luis, city children and youth are at greatest risk and often at a loss for constructive programming.



400 Washington Street  
Hartford, CT 06106

Nonprofit Organization  
U.S. POSTAGE PAID  
HARTFORD, CT  
PERMIT No. 4361

## A SIGN OF PROGRESS

Extending from Wethersfield to Hartford's Southside, Maple Avenue serves as one of the city's major arteries. The avenue is home to a variety of unique restaurants, shops, and small businesses, as well as adjacent neighborhoods.

Over the years Maple Avenue has seen significant progress: new businesses, street improvements, crime reduction, facade improvements, and overall beautification. Spurring this advancement are groups like the Maple Avenue Neighborhood Revitalization Zone, the Maple Avenue Merchants Association, and SINA. SINA provides technical support for the merchants association and has helped stabilize the southern end of Maple Avenue.

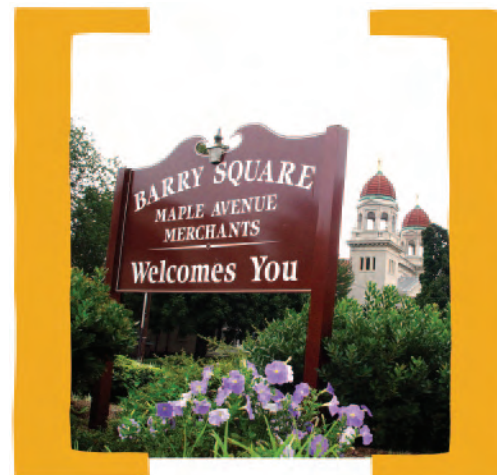
Pasquale, owner of First and Last Tavern, enthused. "Hopefully it will bring people down here." Pat De Pasquale, and his family, have operated their restaurant on Maple Avenue for 22 years. De Pasquale has helped Maple Avenue develop, both with his involvement in the merchants association and with his opening of the new First and Last Bakery Café. To create the Café, De Pasquale converted an abandoned building, providing landscaping, an inviting facade, and new life to a stretch of Maple Avenue.

"The Maple Avenue Merchant Association is motivated, and it takes action," SINA's Executive Director Luis Cabán observed. "They have good ideas and a good sense of direction for Maple Avenue."

The Merchants Association has 32 members and is led by Dennis O'Connor of Noble, Young, and O'Connor. Mr. O'Connor has been with the Association since its inception ten years ago. He hopes to see more merchants join the group, and increased participation from existing members.

"It's really important that we have this association," O'Connor explained. "It's important for the community, and an improved community means improved business. I wish more merchants realized that having a strong association is good for their business."

Two years ago SINA began working with the Maple Avenue Merchants to help energize the association, increase membership, and initiate projects. "SINA is a catalyst," O'Connor described. "They have ideas on how to improve the area. They help coordinate projects like the new merchant sign and the Barry Square cleanup, and they are excellent in follow-up."



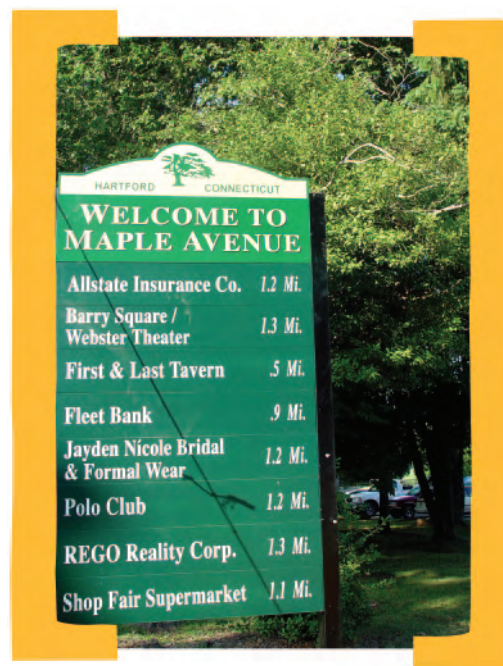
*The Barry Square Triangle received a summer makeover, including mulch, flowers, and weeding.*



"We are on the move, revitalizing Maple Avenue," enthused Hyacinth Yennie, head of the Maple Avenue Neighborhood Revitalization Zone. "Maple Avenue will look like the rising star of Hartford."

Indeed the rising star of Hartford can be seen on Maple Avenue, gracing the new merchant sign located near Goodwin Park Golf Course.

"The sign is great for this area," Pat De



*Located near Goodwin Golf Course, the new Maple Avenue Merchant sign invites motorists to restaurants and stores along the street.*